



# KEEPING UP WITH THE CORPORATES

A quarterly update from your local hospice.



**From June to September 2022, St Elizabeth Hospice is bringing the next Wild in Art Trail to Ipswich, and we hope you are excited as we are!**

Following the successes of Elmer Big Parade in 2019 and Pigs Gone Wild in 2016, our next trail will see the 40 individually designed Big Hoot owls placed around Ipswich for everyone to see and enjoy.

We invite your company, employees and customers to be inspired, get imaginative and celebrate the uniqueness of Suffolk in the biggest free art event to take place across the region.

Wild in Art events are hugely popular wherever they take place, offering an excellent return on investment whether it be staff engagement, supporting local initiatives or driving sales and footfall.



A Wild in Art event brought to Ipswich by St Elizabeth Hospice



**Visit our website and download the Sponsorship Pack to find out more.**

[www.thebighoot.co.uk](http://www.thebighoot.co.uk)

# Charity of the Year Partners 2021

Thank you to  
our 2021 Partners  
so far...

## What our partners say...



*'Whilst some of our staff have already witnessed first-hand how the hospice has provided comfort to members of their own family, the sad reality is that many more will be likely to go through the same experiences later on in their life. For that very reason, we hope that we can play our part and ensure the hospice can continue helping those who so desperately need it.'*



*'We are privileged to be able to support St Elizabeth Hospice through The Ron Harrod Foundation. The outstanding work the staff do to improve the lives of so many is truly remarkable. We will continue to support this amazing charity wherever possible.'*



*'Miller has been providing support to a wide range of good causes for over 20 years, wherever possible. Following a staff nomination and voting process in 2020, five Charity Partners, including St Elizabeth Hospice, were selected and we will work with them throughout 2021 and 2022.'*



EVERSHEDS  
SUTHERLAND

Join us in 2021 as  
one of our Charity  
of the Year  
partners

St Elizabeth  
Hospice

Zest

St Elizabeth  
Hospice

Gt Yarmouth  
and Waveney



Is your business looking for a new challenge in 2021? We love working with our corporate supporters and can offer lots of opportunities whether that be fundraising, sponsorship of events, sharing your business skills or volunteering staff time to support our activities. We will offer you the opportunity to create a bespoke partnership to meet the aims and objectives of both your business and your staff development.

Contact us: [corporateteam@stelizabethhospice.org.uk](mailto:corporateteam@stelizabethhospice.org.uk)

# TRIFEST

Relay Challenge 2021

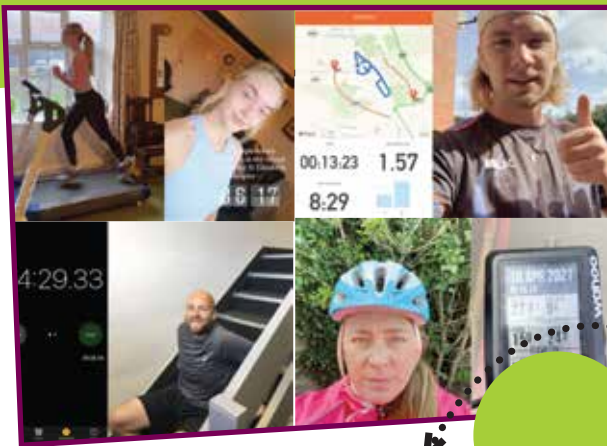
- RUN - CYCLE - STEP UP -

You can check out the Tri-Fest leaderboard on our website.

Thank you to the companies that participated...

EVERSHEDS  
SUTHERLAND

MORGAN  
SINDALL  
CONSTRUCTION



# SUFFOLK REMEMBERS

Monday 21 June



Funeral Services

East of England COOP

BARKER GOTELEE  
POLICYBORN



Headline sponsor

“In recent years, it has been a privilege to help light many of the candles in memory of members of our community, and we look forward to being a part of this year’s event.”

- **Julian Snowling**

Head of Funeral Operations for the East of England Co-op Funeral Services

Thank you to our supporters so far!  
Last few letters available to sponsor.  
Volunteer on Suffolk Day at the event itself.  
Please get in touch for more details.



In Memory

# Thank you, Asda Stoke Park Ipswich



Asda (Stoke Park)

5 d · 🌐

St Elizabeth Hospice was awarded a £750 Supporting Communities Grant from the Asda Foundation

With advice and assistance from our George colleagues and our Home and Leisure Colleagues, we were able to provide men's and ladies nightwear along with a variety of soft cotton towels and face cloths for the hospice's inpatient unit.

– Teresa, Asda community champion



👍❤️ You and 16 others · 3 comments · 2 shares

👍 Like · 💬 Comment · ➦ Share

## Your dedicated hospice team



### Liz Baldwin

Corporate and Sponsorship Fundraising Manager

[liz.baldwin@stelizabethhospice.org.uk](mailto:liz.baldwin@stelizabethhospice.org.uk)

Office: 01473 707933 ext: 285

Mobile: 07843 339523

### Claire Jennings

Corporate Fundraising Assistant

[claire.jennings@stelizabethhospice.org.uk](mailto:claire.jennings@stelizabethhospice.org.uk)

Office: 01473 932430

Mobile: 07932 528490



@StElizabethHospice



@StElizabethHospice



@StElizabethHosp



St Elizabeth Hospice



[stelizabethhospice.org.uk/corporatepartners](http://stelizabethhospice.org.uk/corporatepartners)